

Image produced using the Wacky Lines filter

KENEPEC FILTERS

Plug-in Filters for Digital Imaging

WHAT ARE THEY?

Kenebec Filters is a collection of 18 plug-in filters for digital imaging. They have been designed to operate in PC based digital imaging programs which accept 32 bit Adobe Photoshop compatible plug-ins such as Adobe Photoshop, Photoshop Elements and Paintshop Pro. You can register interest in the 64 bit version via the website.

WHY MORE FILTERS?

These filters were created because the developer wanted them - not because he thought you might want them but because he wanted them for his own digital image processing.

He has decided to make them available as a low-cost package which can be purchased on-line at www.kenebec.com.

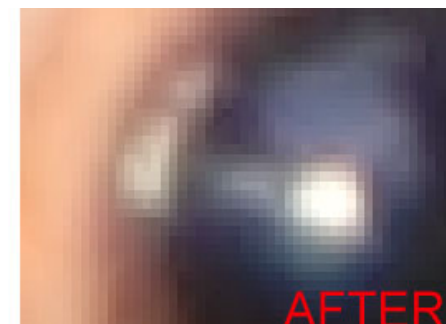
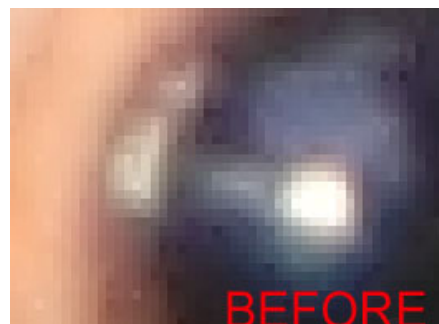
They were developed by Dr Greg Duncan, BA, MBA, PhD, CPAGB, ARPS based on his experience as a practitioner and teacher of digital imaging. He has been a software developer since 1968 and has been writing his own digital imaging software since 1997. They incorporate processes and algorithms which Greg developed, most of which are not available in other plug-in filters.

5 EXAMPLES

FYZZ NOISE REDUCTION

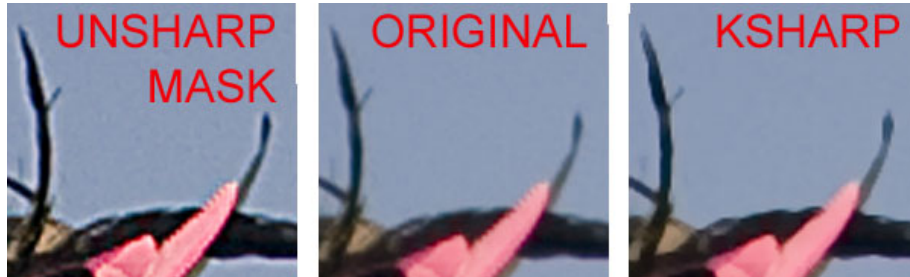
This filter reduces linear fyzz noise - those artefacts which produce the annoying dark and bright spots which show up when you apply Unsharp Mask. Apply this filter as the first step when you open an image and after applying sharpening to an image before saving. The filter works on RGB, Lab and Grayscale images in 8 and 16 bit mode.

Using this filter can substantially reduce JPEG file sizes.



K SHARP - Genuine Sharpening - No halo

This filter performs genuine sharpening of the image by reducing the width of the unsharp area. Unlike Unsharp Mask filters, this filter will not produce a halo. Works on RGB, Lab and Grayscale in 8 and 16 bit.

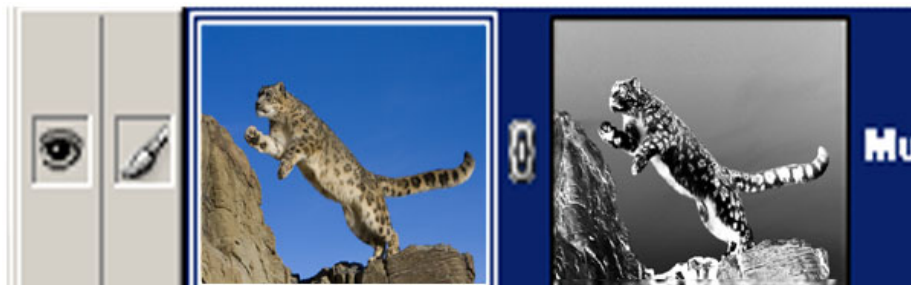


In this image, you can see that the edges are thinner, i.e. sharper, in the picture on the right - the one processed by K Sharp. You can use this filter with a layer mask so that you can control which areas receive the sharpening treatment.

SELF SELECTION - Let the Image be the Mask

Producing a layer mask to control brightness can be difficult and time consuming. This filter provides a simple two step method for making a content aware layer mask for controlling or altering dark or bright areas. The layer mask is based on the luminosity of the original individual image pixels and therefore does not require selection tools or brushes.

The example below was used for controlling the dark areas of the image. The filter gave control over the intensity and tonality of the mask.



UNCOLOUR - Different Options in One Place

There are many ways of converting colour to monochrome - there are many filters which provide such functionality.

But few plug-in filters provide all the options in one simple place. You can save different settings and then skip through them to see which is best for your image.

This figure shows some of the controls available in this filter including both pre and post conversion adjustments such as LEVELS and OVERLAY.

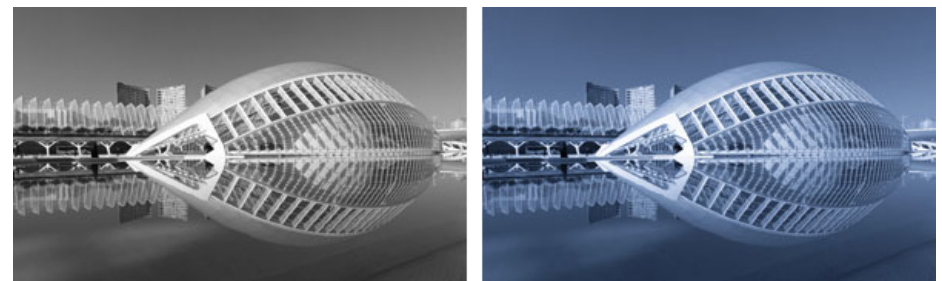
To preserve accuracy, the whole process is done in 16 bit mode even if your image is in 8 bit.



TONE YOUR MONOCHROME - Safer than Chemicals

This filter provides extensive control over toning your images including 14 preset colours (you can also choose your own), five sliders to control the shape of the toning curve and the option to specify the swap over points for split toning. It even includes the option to convert a coloured image to monochrome before toning it.

This monochrome image of the Hemisferic in Valencia, Spain has been toned using the Selenium option with an offset colour point.



FULL FILTER LIST

BLINKERS - Posterization

This filter provides individual colour controls for posterizing an image. You can save and reload your own control values.

COLOUR COUNTER

This filter is used for counting the colours in an image or for creating a full coloured RGB test image (all 16,777,216 colours) or for producing perfectly linear horizontal or vertical gradients.

DEE SHARPEN - Reduce excessive sharpening

This filter provides a controlled method for reducing the impact of Unsharp Mask processing applied to an image.

FYZZ NOISE REDUCTION - Reduce linear noise

This filter is used for reducing linear 'fuzz' noise produced by CMOS sensors. It works on RGB, Grayscale and Lab images.

FYZZ NOISE QUICK - Background process

This filter is effectively the same as the FYZZ NOISE filter but does the noise reduction immediately (for use in a Photoshop Action).

HSL MAYHEM - Special colour controls

This filter allows you to convert an RGB image into the HSL system and back again. The HSL values are stored in the RGB channels.

INTERACTIVE THRESHOLD - You control it !

This filter provides extensive control with respect to "threshold" operations on RGB, Lab and Grayscale images.

JPEG - REDUCE BLOCKING - Recover bad JPEGs

This filter is designed to reduce the JPEG 'blocking' effect found in lower quality JPEG images such as those taken by some telephones.

K SHARP - Non Halonic Sharpening

This filter is designed to produce actual sharpening of an image. It does not produce the halo effect characteristic of Unsharp Mask processes.

LAB SHARPEN RESTORE - Reduces colour change

This filter enables you to produce sharpening which has minimal impact on the colour of the pixels at the edges. It replicates the effect of sharpening luminosity in Lab mode.

PUSH-N-PULL - Overlay and Levels all in one

This filter provides a method for applying OVERLAY and LEVELS type adjustments to control highlight, mid-tone and shadow density. This filter includes a special Levels which does not desaturate the image.

SELF-SELECTION - Easy layer masks

Have the image do a self-selection for your layer masks based on the luminosity - then use various blend modes to control density, contrast, etc.

SHOW EFFECTS - Analyse what's happening

This filter was designed for demonstrating the effect of different actions such as sharpening, LEVELS and the various resizing controls such as BILINEAR and BICUBIC.

SIXTEEN BITS - Creates 16 bit image from 8 bits

This filter produces 16 bit TIF files from 8 bit images. It has been included for those programs (such as Adobe Elements 9) which do not have such an option.

TONING AN IMAGE - Without chemicals

This filter enables you to tone images with controls over colour, intensity, delay, white and black point with presets such as Sepia, Gold, Copper and Selenium.

UNCOLOUR - Convert RGB to Grayscale

This filter has a variety of options for converting RGB colour to B&W with pre and post conversion controls including SAVING your settings.

WACKY LINES - Line drawing with a difference

Using unusual edge detection technology, this filter converts an RGB, Grayscale or Lab image into black and white lines. This filter was used for producing the image of the mountain lion leaping.

ZERO THRESHOLD - Extreme thresholds

This filter provides a quick set of threshold controls designed for image content checking.

SAVE AND LOAD

Those filters which have extensive controls also include the facility to SAVE your current settings and then LOAD them back up at a later time. There are 26 different save locations (A..Z) and you can go through them in turn using the down arrow. This allows you to set-up alternatives and compare the results before applying the filter.

DIFFERENT TYPES OF FILTERS

The filters in this set can be divided into two major groups - operational and analytic. The operational filters are designed to make changes to your images such as threshold conversion, noise reduction, uncolouring, etc.

The analytic filters do not alter your picture but instead provide information about your image such as a count of the number of different colours or the effect of different forms of sharpening or image size adjustment.

The manual sections for the analytic filters include various experiments you may wish to try out such as the massive loss of colour detail when an image is saved in JPEG format (74% loss!).

APPLICABLE SOFTWARE

Although we have been informed that these filters work in other digital imaging software programs which accept Photoshop compatible plug-ins, we have not tested all available software options.

32 BIT PC BASED

The Kenebec Filter set is only for use on a PC based machine running 32 bit versions of Photoshop, etc running under either 32 or 64 bit Windows. The filters have not been developed for use in a MAC based machine as these computers use completely different internal computer instructions. Although we have not tested the situation, we understand that the filters may work on a MAC operating in PC emulation mode. A 64 bit PC version is being developed.

ON-LINE PURCHASE

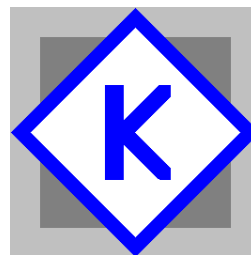
The Kenebec Filters can be purchased on-line and are delivered as a link to a download zip file with full installation instructions.

The zip file also contains an extensive manual and usage guide in PDF format designed for screen access. The manual can be accessed from the HELP command in any of the filters.

To purchase the filters, go to www.kenebec.com click on FILTERS and then click on PURCHASE. If you are reading this PDF on-line, you can click on the [www](http://www.kenebec.com) link shown above.

At the time of producing this brochure the price for the full set is £20.00 including VAT. (10 January 2012).

Register interest in 64 bit version at the website link given below.



Kenebec Media Ltd
1 Gentle Street
Frome, Somerset
England BA11 1JA

Registered in England 03293603

Web: www.kenebec.com/filters
Contact: filters@kenebec.com