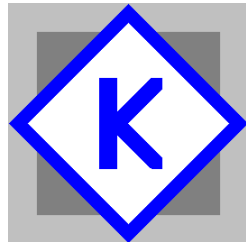


K-3-D

USER MANUAL AND NOTES

For Version 1.1



Kenebec Media Ltd
28 Kingcup Close
Broadstone, Dorset
England BH18 9GS

Registered in England 03293603

Web: www.kenebec.com

Contact: media@kenebec.com

Program desktop icon



CONTENTS

Contents

VERSION CHANGES	2
SYSTEM REQUIREMENTS	2
For K-3-D.....	2
DESIGN AND PRODUCTION	2
PURPOSE	3
Purpose	3
What Does K-3-D Do ?	3
INSTALLATION	4
Install StereoPhotoMaker First.....	4
Installing K-3-D	4
Initial Run.....	4
TELLING WINDOWS	6
"Send To" Versus Double Click.....	6
Setting up Double Click in Windows 10 (and 8).....	7
Word Of Caution	8
Double Click in Earlier Versions of Windows.....	9
SOFTWARE LICENCE AND TRADEMARKS	10

VERSION CHANGES

Version 1.1 - This is the initial version of the program. It replaces all previous beta versions.

SYSTEM REQUIREMENTS

For K-3-D

PC operating under 32 or 64 bit Microsoft Windows 2000 / XP / Windows 7, 8 or 10

Minimum available hard drive space on C drive 20 megabytes.

DESIGN AND PRODUCTION

The K-3-D program was designed and produced by Dr Greg Duncan. The program is provided free of charge by Kenebec Media Ltd and can be downloaded directly from

<http://www.kenebec.com/krange>

Kenebec Media Ltd is also the producer of the K-Salon exhibition software used by various international salons.

PURPOSE

[\(go back to Contents\)](#)

PURPOSE

Purpose

The StereoPhotoMaker program (SPM), designed and produced by Masuji Suto, is a very useful program for processing and adjusting stereo images. It can be downloaded free of charge at

<http://stereo.jpn.org/eng/stphmkr/index.html>

Apart for undertaking basic adjustments such as alignment, rotation and resizing, the program includes options for saving the results in various formats such as JPG, TIFF and MPO. However the program does make one assumption which for some people is not consistent with the way they work.

Some people keep all their original files in one folder and all their *adjusted* files in another folder. SPM *assumes* that this is the workflow pattern used by all photographers.

However, some other people, myself included, do not work this way. I have one folder per image and both the original *and* the adjusted files *for that image* are kept in that one folder. Another image has its own folder with its original and adjusted files in that folder.

The SPM program retains the details of the last folder used for saving a file. This information is NOT changed when you open a file - it is only changed when you go to save the results and explicitly select a different folder.

This means that when I start working on a new image and save the results, if I am not very careful with *every* save, the results will, *by default*, be saved in the folder for the previous image (the one I was working on yesterday). Obviously I can override the location when doing the save, but this is an annoying step which is frequently overlooked leading to the frustration of trying to remember what I last worked on in order to find the results I have just saved!

If your work flow is consistent with the SPM assumption, then the K-3-D program will not be of help to you.

However, if you work the way I do (with a separate folder for each image), you may find the K-3-D program to be of great assistance.

What Does K-3-D Do ?

When you double click on an *mpo* image file, you may have set Windows to know to start the SPM program and have SPM automatically open the file. When you save the results, the SPM program looks up its database to see where you last saved a file and *assumes* you want to save in that same folder.

Similarly, if you open a file via the OPEN option in SPM, it will by default, save the results in the last folder used for saving a file.

However, if you use the K-3-D program and double click on an *mpo* file, Windows will start the K-3-D program and pass the details of the file (drive and folder name) to K-3-D. The K-3-D program then amends the SPM database to set the *last folder* to be the current folder for the image you are going to open. K-3-D then starts the SPM program and the image is automatically opened in SPM. Now, though, when you go to save the results, SPM will save the results back into the proper current folder *for that image* rather than the folder used for the previous image.

Similarly if you use the *SEND TO* option in Windows (see page [\(6\)](#) below), Windows will pass the file details to K-3-D, K-3-D will amend the SPM database, open SPM and SPM will then open your file. This is a very useful way of opening stereo JPG, PNG and TIF files in SPM.

Either way, the process is completely transparent and fast - you will not know it is being done.

This manual explains how to install K-3-D and how to tell Windows to use K-3-D for opening MPO files. All these actions are very simple to set up.

INSTALLATION[\(go back to Contents\)](#)**INSTALLATION*****Install StereoPhotoMaker First***

In order for the K-3-D program to be able to pass the details to the SPM program, it needs to know that the SPM program is installed and where it is installed. Obviously you must, therefore, ensure that SPM is installed in your computer **before** installing K-3-D.

Installing K-3-D

The K-3-D program is supplied as a zipped file (k_3_d_download.zip) containing a self installing EXE file called K_3_D_SETUP.EXE. Double click on the ZIP file and then double click on the file called K_3_D_SETUP.EXE .

During the installation process, it is strongly recommended that you accept the standard installation defaults.

The installation process will create two shortcuts on your desktop which can be moved and/or copied. The first gives access to the program; the second brings up this manual.



The program shortcuts will display the following icon

During installation, Windows may ask for authorisation to install. Click to accept the installation.

Initial Run

The first thing we need to do is let K-3-D know where the SPM program is located. This step only needs to be done once.

When you have installed the K-3-D program, click on the K-3-D desktop icon to start K-3-D. You will be presented with a screen looking as shown in Figure 1. You have two choices - you can either a) point to and select SPM yourself or b) have the program hunt for and find SPM.

Unless you have done something very weird and you are entirely confident with background Windows actions, it is recommended that you select the FIND option.

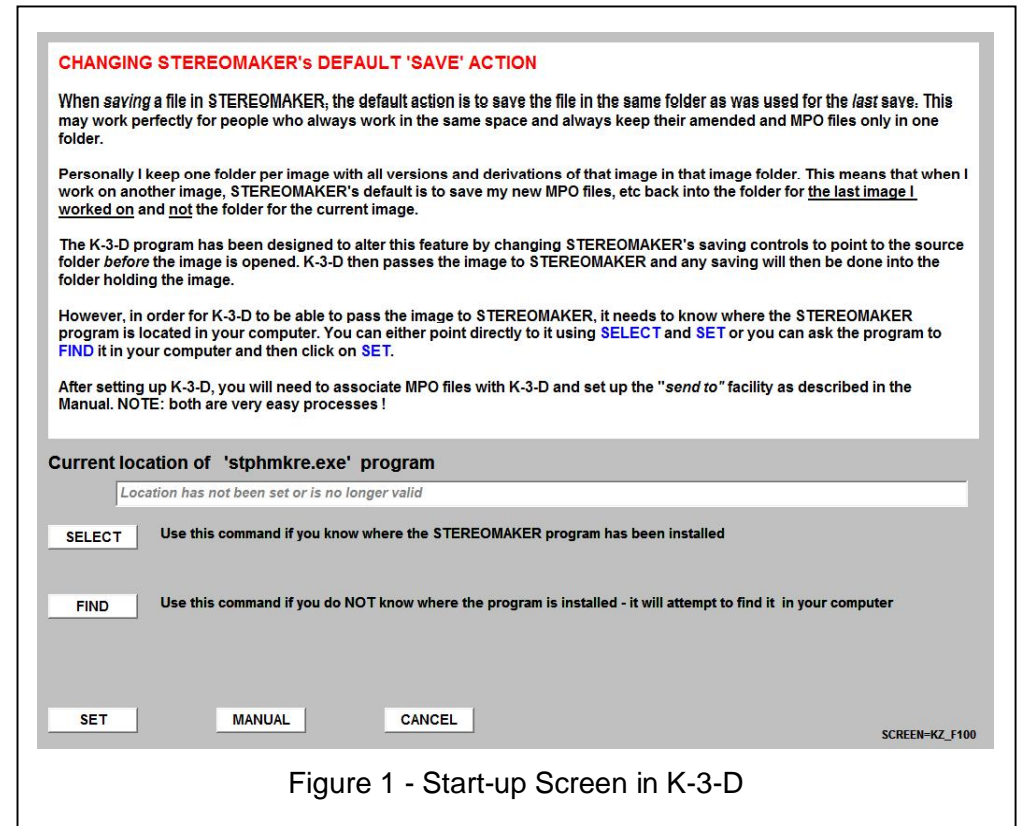


Figure 1 - Start-up Screen in K-3-D

If you click on FIND, you will be presented with a standard Windows Explorer Dialogue box. Again, unless you know exactly what you are doing, click on OK. The program will then hunt through your C drive looking for the SPM program. However, if you installed SPM on a different drive, select that drive before pressing OK.

If the program finds SPM, you will be asked if this is the version of SPM that you want to use. Again, unless you have installed SPM in

INSTALLATION

[\(go back to Contents\)](#)

some weird place, click on YES and then click on SET and then click on OK to close down the program. That finishes the K-3-D set-up phase.

If the program does not find the SPM program you will be told and you may need to do your own hunt and select using the SELECT option. You will be looking for a file called STPHMKRE.EXE

TELLING WINDOWS

[\(go back to Contents\)](#)

TELLING WINDOWS

"Send To" Versus Double Click

There are many ways to open a file.

- a) You can use the OPEN FILE command in a program such as SPM or Word, etc
- b) If you have set Windows to *associate* a particular type of file extension (JPG, TXT, DOC, etc) with a specific program, then you can just double click on the file in Windows Explorer and it will open in the appropriate program such as Photoshop for *psd* files
- c) If you have set up a *Send To* command, you can RIGHT CLICK on the file in Windows Explorer, click on SEND TO and then click on the relevant program.

The SEND TO option is particularly useful in this context if you have saved your 3d image as a JPG or TIF file and you now want to open it in SPM. As mentioned above, if you use the OPEN FILE option in SPM, this will **not** change the default *save folder*. However, if you use the SEND TO option from Windows Explorer, the filename will pass through K-3-D to SPM and the default *save folder* will be changed.

NOTE: The SEND TO option is created automatically when you install K-3-D program. Just right click on the filename in Windows Explorer as shown in Figure 2. Then select SEND TO and then select K-3-D.

If you want to use the simple double click option for MPO files, then please follow the instructions below. Because Windows changed the terminology and interface in Windows 8 and later, the instructions are presented only for the 'new' (Windows 8 and later) versions.

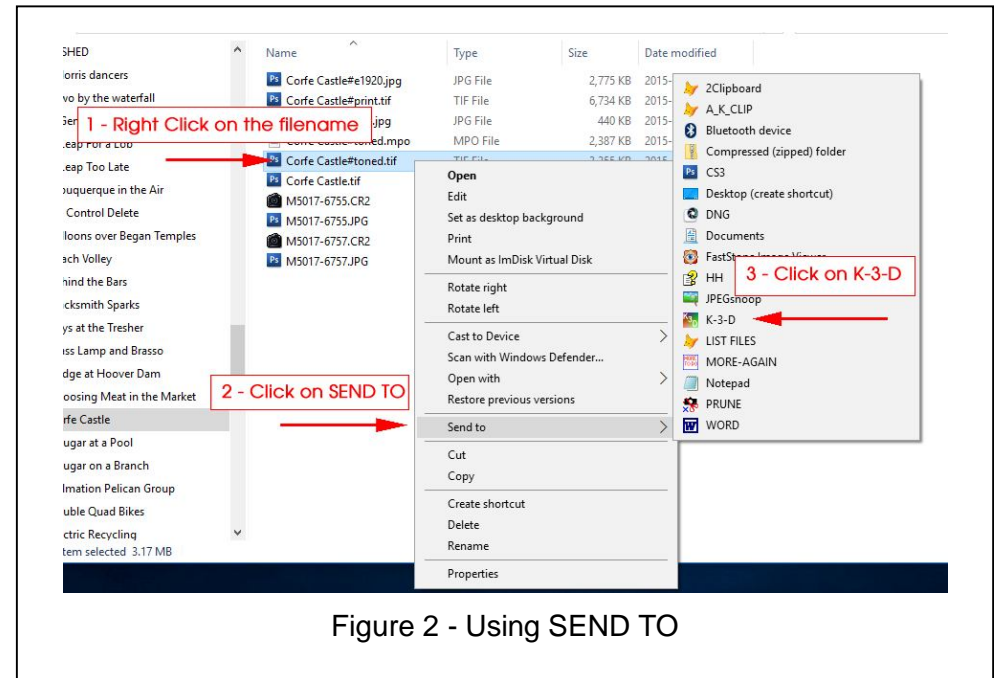


Figure 2 - Using SEND TO

TELLING WINDOWS

[\(go back to Contents\)](#)

Setting up Double Click in Windows 10 (and 8)

You now need to tell Windows that all MPO type files are to be passed directly to K-3-D rather than SPM. This is a very simple operation.

- 1) Open the Windows File Explorer (not the web Internet Explorer).
- 2) Navigate to a folder which contains at least one MPO file.
- 3) **Right click** on the MPO file and you will be presented with a set of options as shown in Figure 3.
- 4) Click on OPEN WITH then click on "Choose another app" as shown in Figure 3. In Windows 8 this appears as "Choose default program..."

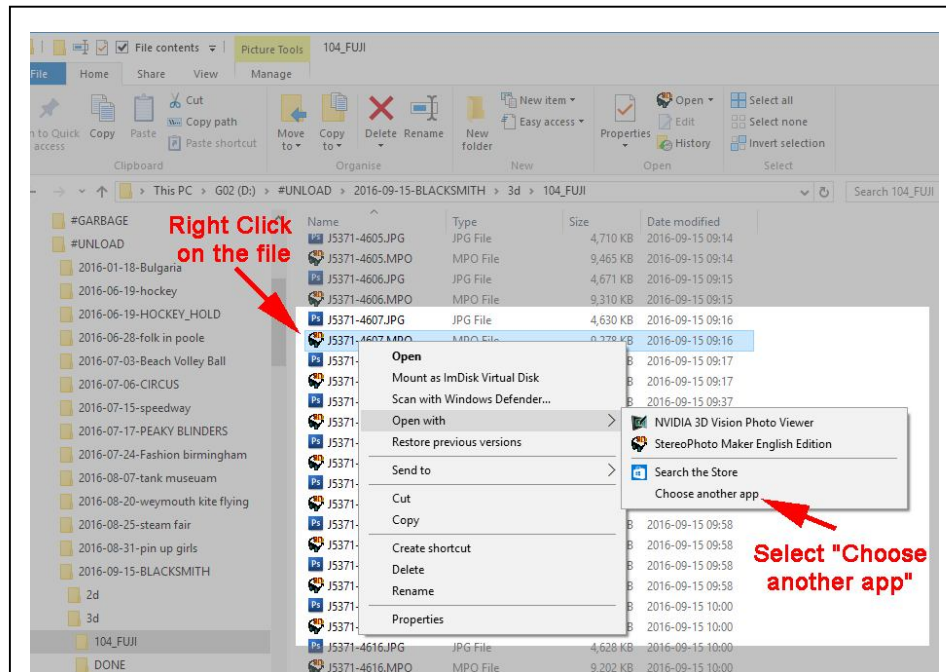


Figure 3 - After Right Click on MPO type file

- 5) In the next screen you may see various programs listed perhaps even including StereoPhotoMaker. DO NOT click on it.

Tick the box "Always use.." and then scroll down to the bottom and click on "More apps" as shown in Figure 4. In Windows 8 this appears as "More options"

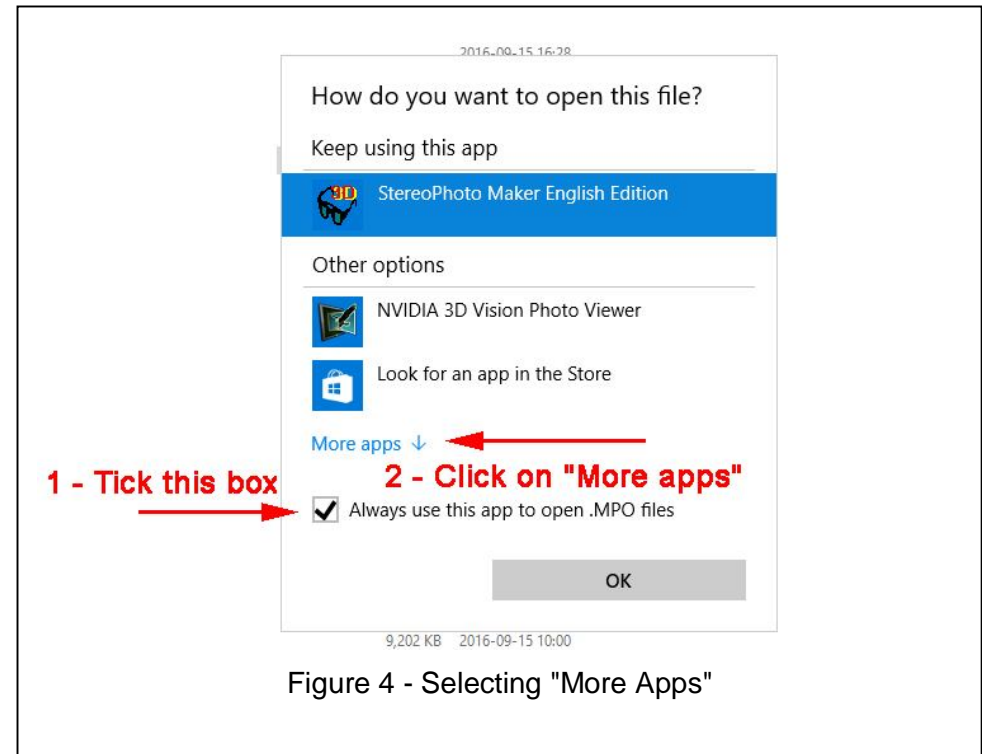


Figure 4 - Selecting "More Apps"

TELLING WINDOWS[\(go back to Contents\)](#)

6) In the next screen scroll down. If K_3_d is listed then click on it. If it is not listed then scroll down to the bottom and click on "Look for another app on this PC" as shown in Figure 5.

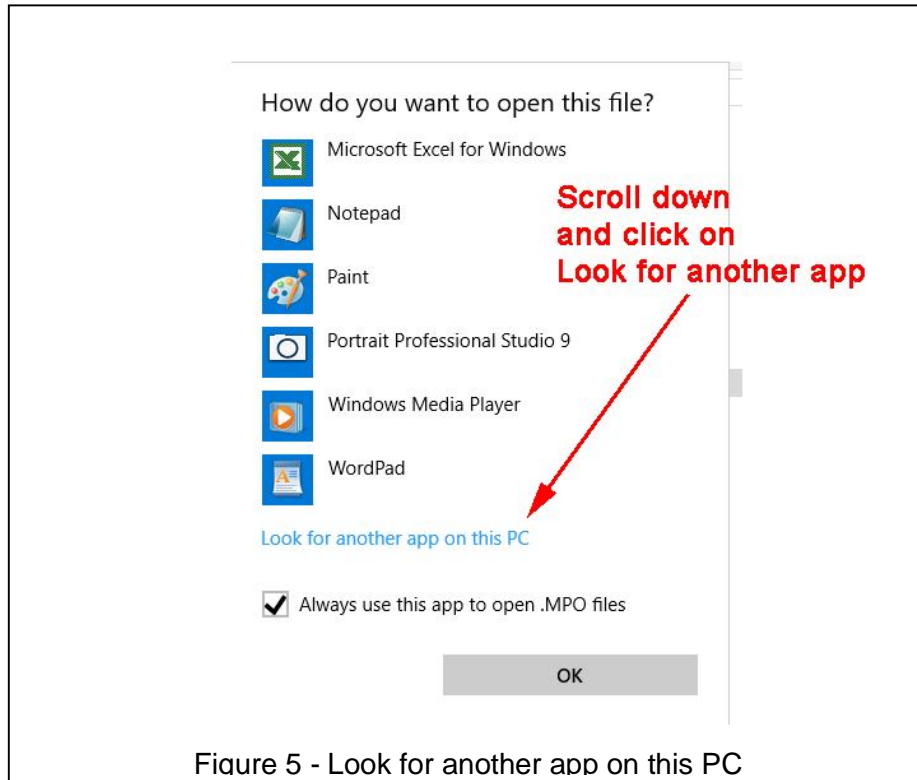


Figure 5 - Look for another app on this PC

- 7) You should now be presented with Windows Explorer. Click on the C: drive. Scroll down to "Program Files (x86)" and click on it. Scroll down to folder "KENEBC" and click on it. Scroll down to folder "K_3_D" and click on it. You should now see k_3_d.exe as shown in Figure 6.
- 8) Double click on "k_3_d.exe" and that is everything done. The mpo file you were pointing to in step 3 above should now appear in StereoPhotoMaker.

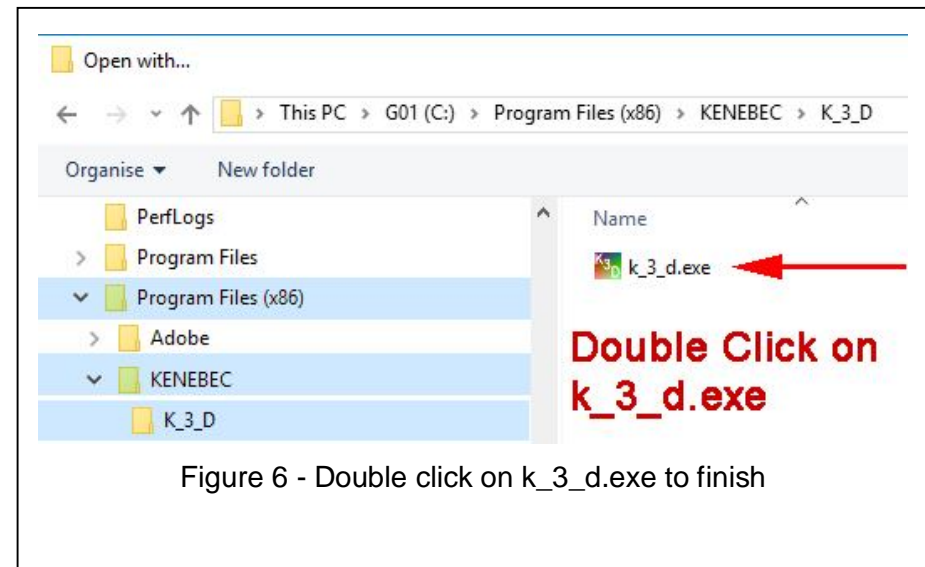


Figure 6 - Double click on k_3_d.exe to finish

FROM NOW ON when you want to open an mpo file in StereoPhotoMaker, all you need to do is double click on it in Windows Explorer and the K-3-D program will alter the save controls in SPM, start SPM and pass the file to SPM and it will open automatically.

Word Of Caution

If you open a file in SPM using the OPEN FILE command and you change folder to do so, SPM will still save any changes back into the last folder used for saving. The changes to the save folder **only** take effect if you use K-3-D to open your file either as a double click on the mpo filename or using the SEND TO option.

Double Click in Earlier Versions of Windows

The double click option has been present in Windows going way back to Windows 2000 and earlier. It requires that you create an *association* between the file extension (such as .mpo) and a program that you want Windows to use for processing such files.

However, the technique for doing the association has not always remained the same.

If you are running an 'old' version of Windows such as 7 or Vista or XP, then you may need to look on the web for the process required to 'associate' a file extension and a program. When you do find how to do this for your older Windows, you need to 'associate' MPO files with the K-3-D.exe program.

[LICENCE AND TRADEMARKS](#)

[\(go back to Contents\)](#)

SOFTWARE LICENCE AND TRADEMARKS

The programs in this suite of programs have been produced by Kenebec Media Ltd and are the copyright property of Kenebec Media Ltd. Installation of the programs is taken as agreement to be bound by the conditions set out in this licence agreement.

Right To Use

This licence grants to you or the organization or club which obtained the program a perpetual non-exclusive right to use the software. This is a licence to use and does not convey any rights over the software nor does it convey any right to distribute or make the software available to any other person or organization.

Permissions

You are permitted to install the suite on any and all of your personal computers.

Prohibitions

Under the terms of this licence you are not permitted to attempt to reverse engineer, decompile or otherwise disassemble any of the programs supplied or downloaded as part of this program suite or any of the programs, security features or databases created during the running of these programs.

As Is

The suite is provided on an 'as-is' basis and no warranty is provided with respect to its operation or suitability for any specific purpose. Installation and usage of the suite is done at your own risk and Kenebec Media Ltd will not accept any liability for any consequential action resulting from using or installing the suite. If you do not accept this condition, then you are advised either not to install the suite or, if it has been installed, to uninstall the program.

Licensor

Kenebec Media Ltd, 28 Kingcup Close, Broadstone, Dorset, England BH18 9GS Reg England 03293603

Trademarks

The Kenebec K is a registered trademark licenced to Kenebec Media Ltd.

StereoPhotoMaker is a trademark or registered trademark held by Masuji Suto.

Windows is a trademark or registered trademark of Microsoft Inc for the operating systems produced by Microsoft Inc.

Copyright

The K-3-D program, this manual and all images in it are copyright Kenebec Media Ltd and/or Kenebec Images Ltd, 2016.